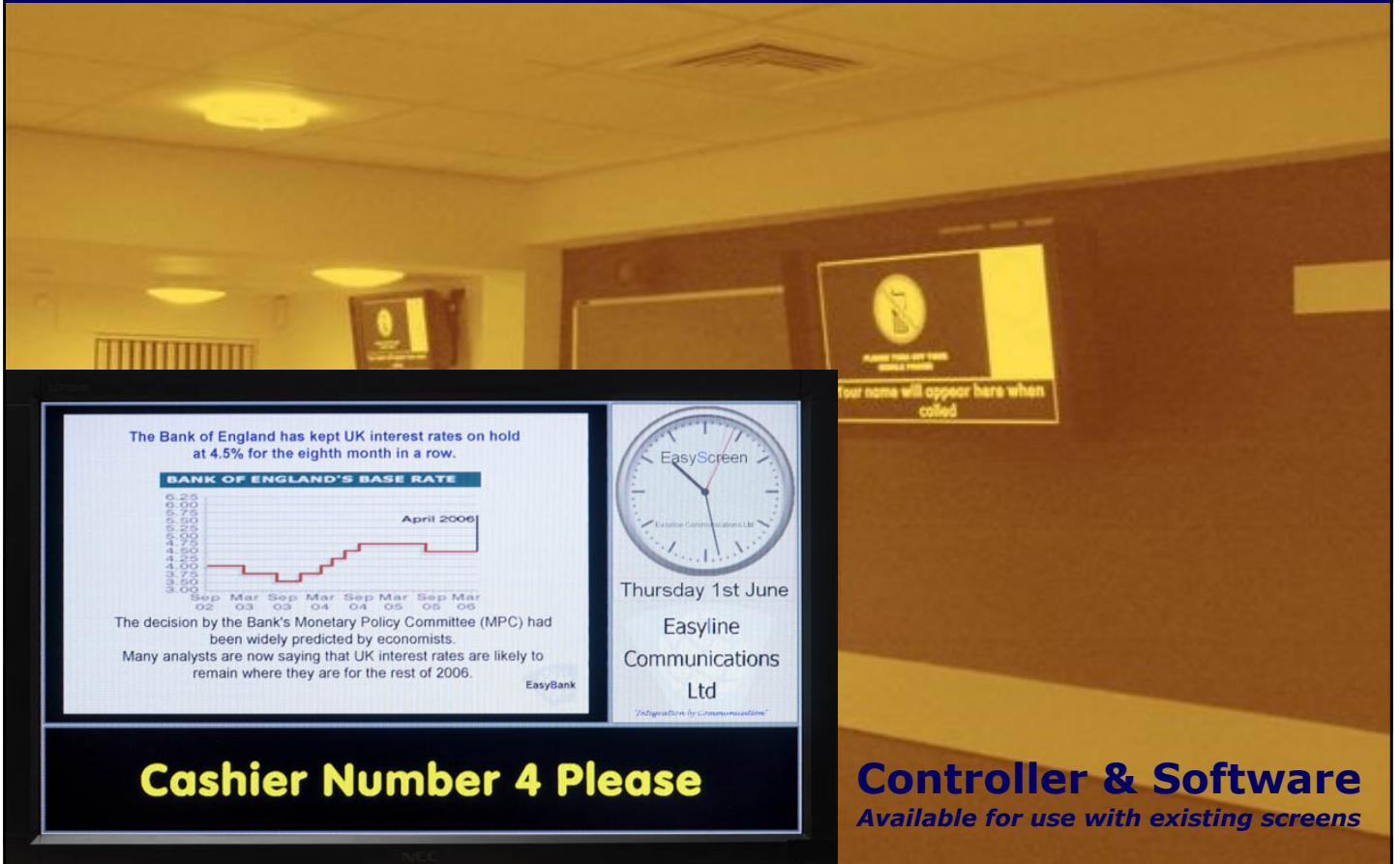


# EasyScreen for Banking & Retail



**Controller & Software**  
Available for use with existing screens

## Introduction

EasyScreen consists of three independent addressable areas on one large LCD screen, with easy to use "web browser" software allowing it to be configured & controlled securely from any enabled location.

Other screens may be added as SLAVES (showing the same content) or as additional MASTERS (showing the same or different content).

The Text to Speech functionality associated with the Text area of the display assists organisations in compliance with the Disability Discrimination Act, with further assistance given by linking the audio output of the system to an induction loop system. Whilst the use of "yellow" text on "black" further enhances EasyScreens credentials as a DDA compliant information system.

## Benefits

When integrated to existing *call queuing & goods collection* systems EasyScreen becomes the focal point for companies information & promotional campaigns: -

- Branch / Local Information
- Corporate Promotions
- Advertisements (TV)

Resulting in : -

- Better Informed Customers
- Selling More Services
- Reducing Delays



**Easyline Communications Ltd**  
*Communication by Integration*

EasyScreen consists of a multimedia controller (**ESC**), Easyline software, LCD screen, mounting bracket and speakers.

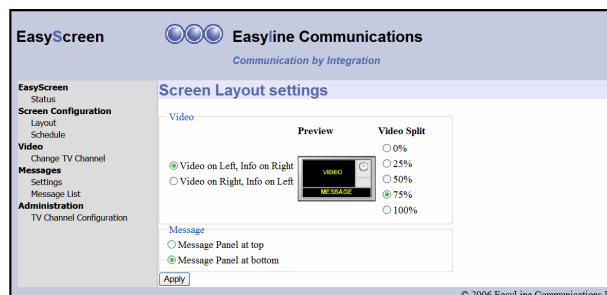
Easyline Communications offer a choice of LCD screen types and sizes; standard starting at 37" and rugged starting at 32"

## ESC

Fanless, ventless and sealed on five out of six faces, the ESC is available in three colours; black, blue and red. Engineered to be dust, rain and splash resistant it is suitable for both indoor and outdoor applications.

With proprietary Easyline software, the ESC brings a whole new dimension of configuration and control to new or existing LCD Screens.

### *Easyline Web Browser Configuration & Control Software*



## Features

- Dust, rain and splash resistant
- Completely fanless
- Wall mountable
- Black casing standard

## Specifications

<b>CPU</b>	Onboard VIA C7/Eden 1.0 GHz
<b>Memory</b>	1 x DDR2 socket supporting up to 1 GB
<b>VGA</b>	VIA UniChrome Pro AGP graphics with MPEG-2 decoding accelerator
<b>Ethernet</b>	VIA Fast Ethernet Controller or Gigabit Ethernet
<b>HDD</b>	1 x 2.5" HDD and 1 x DOM (Disk On Module)
<b>Parallel</b>	Onboard Connector
<b>USB</b>	8 x USB 2.0 ports (4 from internal pin headers)
<b>Keyboard/Mouse</b>	2 x PS/2
<b>Sys Management</b>	CPU voltage monitoring, Wake-on-LAN, Keyboard-Power-On, Timer-Power-On, System Power management, AC power failure recovery
<b>Thermal System</b>	Totally fanless
<b>Chassis</b>	Totally ventless: Dust, rain and splash resistant
<b>Temperature</b>	0-45 degrees C (operating), -20-70 degrees C (storage)
<b>Dimensions</b>	212(H) x 206(W) x 64(D) mm

## Options

<b>Digital TV receiver</b>	USB DVB-T module
<b>Wireless LAN</b>	Internal USB module
<b>Remote Control</b>	PS2 interface IR remote control

Details subject to change without prior notice

### **Easyline Communications Limited**

Unit 19, Blatchford Close, Horsham, West Sussex RH13 5RG

**Phone:** 01403 274927      **Fax:** 01403 270085

**Email:** info@easylinecomms.co.uk www.easylinecomms.co.uk



**Easyline Communications Ltd**  
*Communication by Integration*