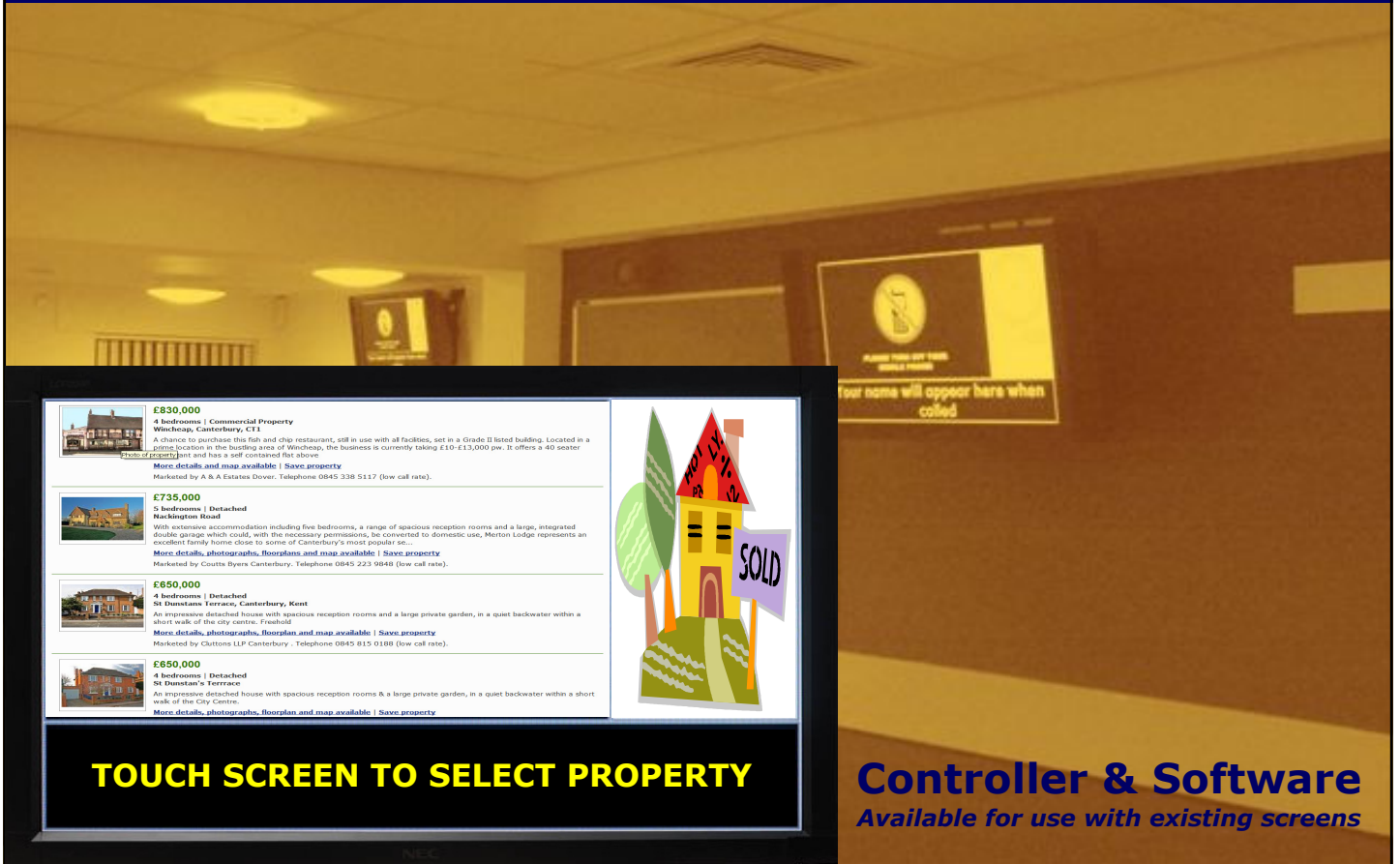


EasyScreen for Estate Agents



Introduction Benefits

EasyScreen consists of three independent addressable areas on one large LCD screen, with easy to use "web browser" software allowing it to be configured & controlled securely from any enabled location.

The independent split screen areas allow corporate advertising to take place at the same time as local and spot promotions, all controlled from different locations.

Other screens may be added as SLAVES (showing the same content) or as additional MASTERS (showing the same or different content).

The addition of "Through Glass Touch" technology allows EasyScreen to interact twenty four seven with potential customers any time of day or night.

Estate Agents
EasyScreen becomes the focal point of any Estate Agents promotional activity, showing available properties, along with: -

- Videos
- Corporate / Branch Promotions
- Associated Services

With customer interaction via "Through Glass Technology" twenty four seven leading to more potential sells.



Easyline Communications Ltd
Communication by Integration

EasyScreen consists of a multimedia controller (**ESC**), Easyline software, LCD screen, mounting bracket and speakers.

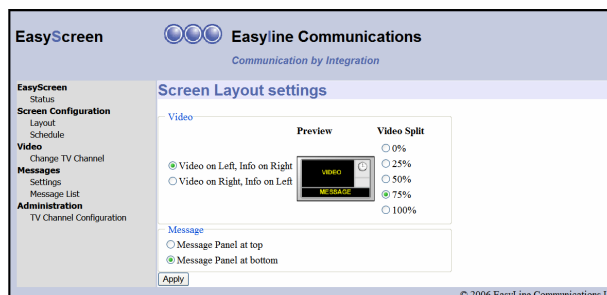
Easyline Communications offer a choice of LCD screen types and sizes; standard starting at 37" and rugged starting at 32"

ESC

Fanless, ventless and sealed on five out of six faces, the ESC is available in three colours; black, blue and red. Engineered to be dust, rain and splash resistant it is suitable for both indoor and outdoor applications.

With proprietary Easyline software, the ESC brings a whole new dimension of configuration and control to new or existing LCD Screens.

Easyline Web Browser Configuration & Control Software



Features

- Dust, rain and splash resistant
- Completely fanless
- Wall mountable
- Black casing standard

Specifications

CPU	Onboard VIA C7/Eden 1.0 GHz
Memory	1 x DDR2 socket supporting up to 1 GB
VGA	VIA UniChrome Pro AGP graphics with MPEG-2 decoding accelerator
Ethernet	VIA Fast Ethernet Controller or Gigabit Ethernet
HDD	1 x 2.5" HDD and 1 x DOM (Disk On Module)
Parallel	Onboard Connector
USB	8 x USB 2.0 ports (4 from internal pin headers)
Keyboard/Mouse	2 x PS/2
Sys Management	CPU voltage monitoring, Wake-on-LAN, Keyboard-Power-On, Timer-Power-On, System Power management, AC power failure recovery
Thermal System	Totally fanless
Chassis	Totally ventless: Dust, rain and splash resistant
Temperature	0-45 degrees C (operating), -20-70 degrees C (storage)
Dimensions	212(H) x 206(W) x 64(D) mm

Options

Digital TV receiver	USB DVB-T module
Wireless LAN	Internal USB module
Remote Control	PS2 interface IR remote control

Details subject to change without prior notice

Easyline Communications Limited

Unit 19, Blatchford Close, Horsham, West Sussex RH13 5RG

Phone: 01403 274927 **Fax:** 01403 270085

Email: info@easylinecomms.co.uk www.easylinecomms.co.uk



Easyline Communications Ltd
Communication by Integration